

DC Company Profile

A Pioneer Base Construction Materials Supplier in Japan



Corporate Data

Company Name	DC CO.,LTD.	
Capital	4,013 million yen	
Consolidated net sales	41,000 million yen (Year Ended March 31,2010)	
Non-consolidated net sales	26,000 million yen (Year Ended March 31,2010)	
Number of employees	530	
Qualified staff	Doctor of engineering	4
	Registered civil engineers	2
	First-class civil engineering operation and management engineers (national qualification)	3
	First-class qualified architects (national qualification)	2
	Chief concrete engineers (JCI authorized qualification)	10
	Concrete engineers (JCI authorized qualification)	30
	Stock Exchange Listings	Tokyo Stock Exchange
Head Office	8 Higashida-cho, kawasaki-ku	
	kawasaki-city, Kanagawa, JAPAN	
	Tel: +81-44-223-4769 Fax: +81-44-223-4760	

Profile

DC CO., LTD. is a Japan-based company mainly engaged in the cement and aggregate businesses. The company has seven business segments.

- The Cement-Related segment is engaged in the manufacture and sale of cement, solidification materials and slag products.
- The Aggregate business segment excavates, manufactures, transports and sells aggregates.
- The Environmental Recycle segment is engaged in the reuse of by-products and wastes.
- The Real Estate Leasing segment leases real estate properties.
- The Ready-mixed Concrete and Secondary Concrete Products segment is involved in the manufacture and sale of ready-mixed Concrete, as well as secondary concrete products.
- The Conduit segment is engaged in the sale of sewer manhole and rainwater storage & infiltration products.
- The Others segment is engaged in the consulting business related to construction. Import and export of goods.
- The Company has 19 subsidiaries and two associated companies.



Cement plant

DC Group

The DC Group consists of 16 companies with DC CO., LTD. at its core. The DC Group provides comprehensive services to cover everything from procurement of raw materials to sales of finished products, including mining of mineral resources, concrete production, freight handling of such products, production of ready-mixed concrete combining cement and minerals in optimal conditions to deliver to construction sites, and construction of concrete sewer pipelines.

Cement Business

UTSUI DC KOSAN CO.,LTD.

ICHIKO CO.,LTD.

MIYOSHI SHOKAI CO.,LTD.

Mineral Resources Business

SANMEI Industry CO.,LTD.

SUEYOSHI Industry CO.,LTD.

KENMOTSU Industry CO.,LTD.

SANEI Development CO.,LTD.

KUNIMIYAMA SHIGEN CO.,LTD.

Environmental Recycling Business

EBATA Corporation

SHINSEI TOCHIGI Corporation

Ready-Mixed Concrete Business

DCM Ready-Mixed Concrete Holding CO.,LTD.

DAIICHI Concrete CO.,LTD.

EBATA Ready-Mixed Concrete CO.,LTD.

FUJISAWA Ready-Mixed Concrete CO.,LTD.

DAITO Concrete HIDA Industry CO.,LTD.

NODA Ready-Mixed Concrete CO.,LTD.

PipeLine Business

EBATA Corporation

Other Businesses

SHINSEI Corporation



Ready-Mixed Concrete Plant





C

ement Business



Central control room



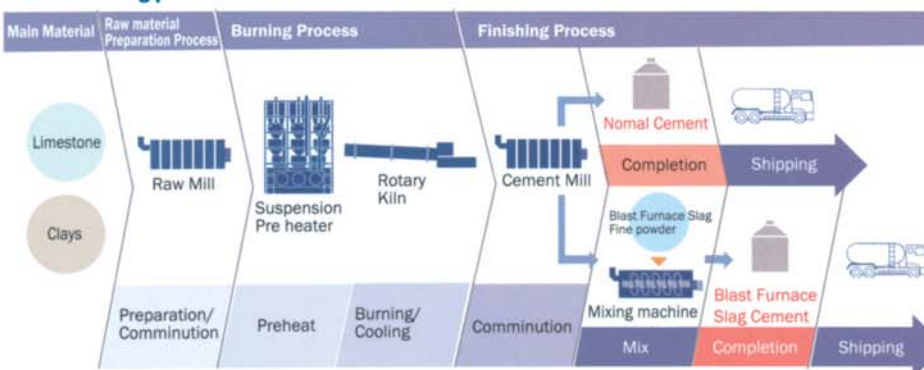
LNG tank mass-concrete placement

Adapting Materials Used in Construction and Civil Engineering to the Needs of Changing Times. Our lineup of products, honed through experience, continues to expand and become more specialized with advances in technology.

Our history of operations in the cement business goes back a long time, beginning in 1917, and our cement factory is one of the oldest in the country. Our Kawasaki Plant in Kanagawa Prefecture currently produces and delivers approximately 1.3 million tonnes of cement, mineral admixture, and soil stabilizer every year to customers, contributing to the building of social infrastructure.

The Kawasaki Plant is characterized by the fact that it is the only cement factory in the metropolitan area, which is the largest consumer of its products. Its strength also lies in the advanced technology and knowhow on the use of blast furnace slag (a by-product from an adjacent iron mill). Furthermore, the factory makes full use of its location and technology to promote effective utilization of wastes, by-products, displaced soil from construction sites, etc., as a countermeasure against environmental problems which are becoming increasingly serious by the year.

Manufacturing process of cement



Cement and Other Products

We develop, manufacture, and sell a vast range of products in response to demand, such as cement, mineral admixture, and soil stabilizer, indispensable in the development of social infrastructure.

Mineral Admixture

This is an admixture for high-strength, high-durability cement-related products.

High-Strength Mineral Admixture

This is an admixture which enables the making of high-strength concrete by simply replacing 10 – 20% of the Portland cement used at the factory with it.

Soil stabilizer

We have a variety of soil stabilizer products to answer to the needs of all kinds of soils and construction conditions. To address environmental issues in particular, we have developed a hexavalent chromium inhibiting stabilizer and a dust suppressing stabilizer.

Acid Resistant Cement-Related Material

We can make ready-mixed concrete that is highly resistant to acids such as sulfuric acid.

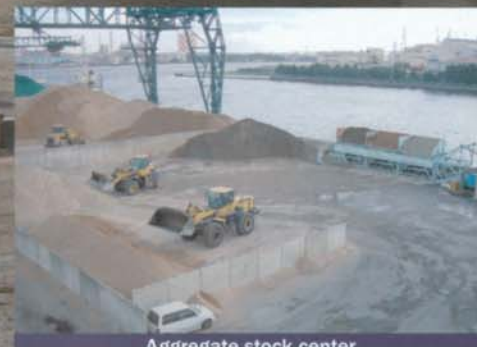
Special Cement

We have a variety of cement products, from low-heat, to high-durability, super high-strength, high fluidity, and watertight cements. In particular, we also make and sell crack-resistant cement to meet social demand in recent years for high-durability concrete.

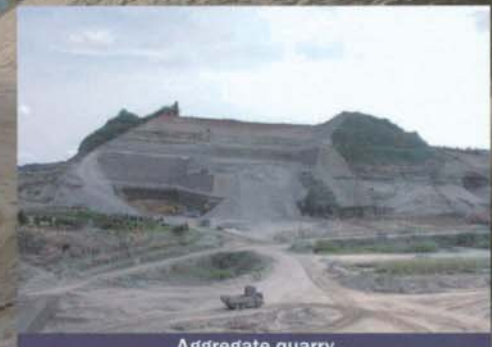
General-Purpose Cement

This is the most commonly used type of cement, and it is used widely in general mortar and concrete construction work.

DC Provides Construction Materials and Concrete Products while Striving to Reduce Environmental Impact.



Aggregate stock center



Aggregate quarry

M

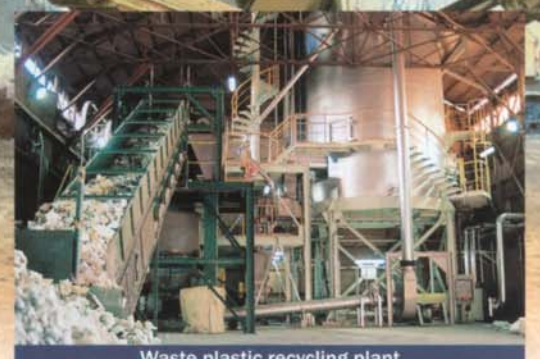
Mineral Resources Business

We have what it takes to supply concrete for construction to the metropolitan area with reliability and speed. Concrete provided by a team of specialists in concrete materials. We deliver high-quality products to our customers, and contribute to the development of social infrastructure.

Our mineral resources business revolves around producing and selling sand at the four factories we have in Chiba Prefecture. The entire area around Kimitsu City and Ichihara City in Chiba Prefecture, where the aggregate factories of our group are located, has one of the largest sand deposits in the country. The area is also located within the metropolitan area, which is the greatest consumer of aggregate materials. Compared to sand from other sources, the area is the main supplier of not just the metropolitan area but also the entire Kanto region. Furthermore, we began a gravel business in April 2011, in the Kansai region. DC CO., LTD. has made use of the strategic locations of these factories to expand business operations through bolstering of production facilities and development of the logistics network. Other than producing and selling sand at our factories, our mineral resources business has contacts with other leading suppliers on the outskirts of the metropolitan area, and also procures and sells gravel shipped from Shikoku and Hokkaido in large ships.



Discarded carpet tiles recycling plant



Waste plastic recycling plant

E

Environmental Recycle Business

Thorough operations management turns “wastes” into “products,” then into a “business model.” Management combines with environmental initiatives to form a new business model for the future.

DC CO., LTD. develops and uses technology and products to lighten the burden on the environment in a constant effort to improve it. Specifically, we have made use of our advanced knowhow accumulated over the years, based on incineration technology at high-temperatures exceeding 1,450°C to recycle industrial wastes and by-products. As raw materials, we accept filter cakes and incinerated sewage sludge ash from various municipalities, and from the private sector we accept sludge, incinerator residues, and numerous other types of wastes for effective utilization. In addition, we have begun making effective use of waste plastic and waste wood as fuel. We have even gone one step further to try and establish a recycling business to use polluted soil from construction sites as raw material in cement, and we have entered into the recycling industry for reutilizing discarded carpet tiles often used for covering the floor of office buildings, hotels, and industrial facilities. We will make full use of our management resources to continue promoting the recycling of wastes in the future. We will also strive to develop new technologies, and further expand and promote recycling and the effective utilization of industrial and other wastes.

Intermediate treatment	Incineration	Incinerator residues Wastepaper Sludge Waste acid	Scrap metal Waste rubber Waste glass Slag	Particulate matter Waste plastic Waste textiles Waste food	Waste wood Rubble All 14 types
	Pulverization and incineration	Waste plastic : 1 type			
Treatment	Cement production and insolubilization	Polluted soil			
	Pulverization and volume reduction	Discarded carpet tiles			





Real Estate Business

Efforts to develop technology and streamline operations have fortified production as well as our management foundation.

The main purpose of the business is to make effective use of the property owned by the company. Our real estate leasing business is based on not taking risks, and sound operation to achieve steady results. It serves as a major pillar of the company as a stable source of income. By making effective use of company-owned real estate, we will continue aiming for even greater expansion in the future, adhering to our fundamental non-risk policy.



Research and development

We will continue sustainable development of current products, and constantly strive to push back frontiers in the development of new products and technology.

In response to the demands of our customers, slag in particular, is playing a pivotal role in our development of products. We are also actively involved in the development of materials for repair and maintenance, including precast products, as a countermeasure against the degradation of concrete of infrastructure over time.



Location Map of Production Sites



Kawasaki Cement Plant



Chiba Sand Quarry



DC CO., LTD. Head Office

8 Higashida-cho, Kawasaki-ku, Kawasaki-city, Kanagawa, JAPAN

URL: <http://www.dccorp.jp>